

- **HMBC2** 27"L x 34-1/8"D x 56-1/4"H
- **HMBC3** 39"L x 34-1/8"D x 56-1/4"H
- **HMBC4** 51"L x 34-1/8"D x 56-1/4"H
- **HMBC5** 63"L x 34-1/8"D x 56-1/4"H
- **HMBC6** 75-3/8"L x 34-1/8"D x 56-1/4"H

Included

- Breeze w/EnergyWise s/c refrigeration
- Clear glass shelf, lighted (LED 3500K) in upper display
- Compressor air rear intake, front discharge. Toe kick cannot be blocked
- Condensate pan (self-contained refrig. only)
- Convertible baffle in upper display
- Curved double pane, lift-up front glass w/o lock
- Cutaway end panel
- Flat front panel
- Integrated average product temperature of 40°F or less
- LED 3500K top & shelf lights
- One year parts & labor; 5 year compressor warranty
- Rear sliding doors (26" model swinging)

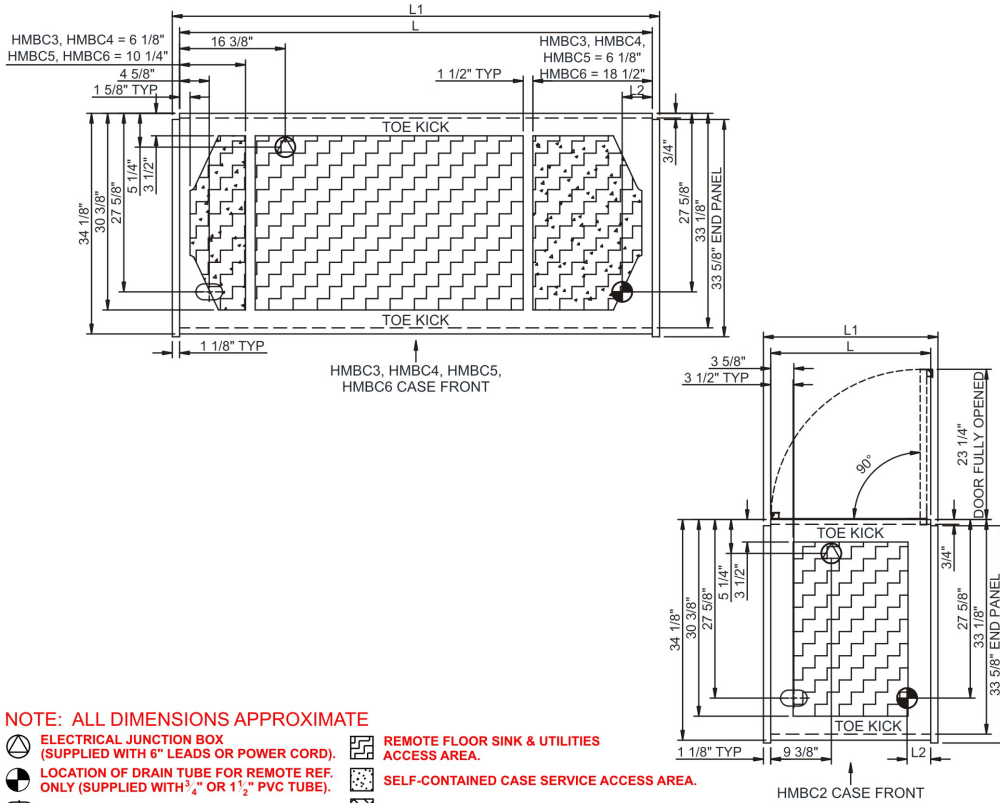


HMBC4

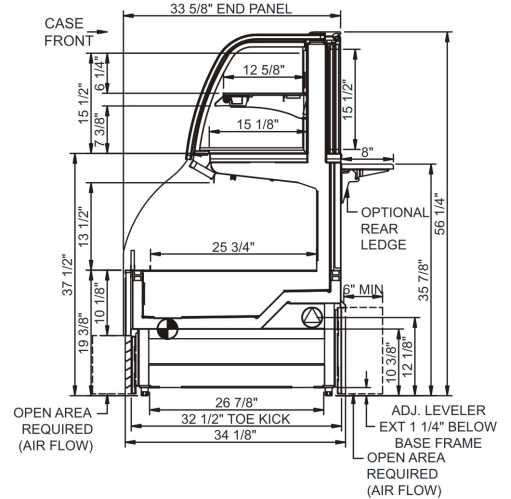
| Specify | Standard Features | Additional Options |
|----------------------------|---|--|
| EXTERIOR COLOR | • Laminated (non-premium) Confirm pattern/grain direction | • Laminated (premium) Confirm pattern/grain direction • Stainless steel (includes rear of case) |
| INTERIOR COLOR | • Black | • Stainless steel • White |
| REAR EXTERIOR COLOR | • Painted - White | • Painted - Black • Stainless steel (w/stainless ext. only) |
| TRIM COLOR | • Black | • Silver |
| BASE | • Levelers | • 6"H legs • Casters (n/a with remote) |
| LOWER REAR | • Solid back panel | • Rear sliding doors w/o lock (26" model swinging) (specify LH or RH hinge) |
| UPPER REAR | • Clear glass rear sliding doors w/o lock (26" model swinging) (specify LH or RH hinge) | • Reflective glass rear sliding doors w/o lock (26" model swinging) (specify LH or RH hinge) |
| ELECTRICAL CONNECT | • 6' Straight blade power cord (self-cont.) | • 6' Locking power cord (self-cont.) • Electrical leads (remote) |
| REFRIGERATION | • Breeze w/EnergyWise s/c refrigeration | • Note: Remote doesn't incl Conds unit. Floor drain reqd. • Remote w/thermostat, solenoid & TXV |
| MISCELLANEOUS | | • Additional shelf for upper display, lighted (LED) • Lower rear door lock • Second year parts & labor warranty (excludes compressor) • Upper rear door lock |
| ACCESSORIES | | • 2"H Full depth display riser(s) for lower display • 4"H Full depth display riser(s) for lower display • Bottle slide, gravity feed • Clean Sweep® coil cleaner (n/a w/remote) • Night curtain, retractable, non-locking • Price tag molding (matches interior color) • Rear wrapping board (n/a w/lower rear doors) • Removable wire security cover, locking (for lower display, secures upper/lower) |

| | | |
|--|---|----------------------------------|
| Intended Environment: Type I - Designed to operate in ambient conditions of 75°F with 55% relative humidity unless noted otherwise in system information below. | | |
| Zone | Intended Product To Be Displayed | Warmest Avg Prod Temp ° F |
| 1 | Packaged refrigerated products | 40 |

PLAN VIEW



SIDE VIEW



NOTE: ALL DIMENSIONS APPROXIMATE

- ELECTRICAL JUNCTION BOX (SUPPLIED WITH 6" LEADS OR POWER CORD).
- REMOTE FLOOR SINK & UTILITIES ACCESS AREA.
- LOCATION OF DRAIN TUBE FOR REMOTE REF. ONLY (SUPPLIED WITH 3/4" OR 1 1/2" PVC TUBE).
- SELF-CONTAINED CASE SERVICE ACCESS AREA.
- REFRIGERATION LINE CONNECTION.
- DRY CASE SERVICE ACCESS AREA.

Model Technical Specifications

| Model | L" | L1" | L2" | System Circuit Volts | | Phs | Freq | Amps *** | Watts | Wires | NEMA Plug | SST | Conv. Rack RTU# | Para. Rack RTU# | Est Wt | |
|-------|-------|-------|------|------------------------|------------|----------|------|----------|-------|-------|-----------|-------------------|-----------------|-----------------|--------|-------|
| | | | | Circuit #1 | Circuit #2 | | | | | | | | | | | |
| HMBC2 | 24.75 | 27.00 | 3.63 | Remote(Type I) | Circuit #1 | 110-120 | 1 | 60 | 1.66 | 163 | 2+G | Leads Multiple | 20.00 | 2506 | 2320 | 650 |
| | | | | Self-Contained (DX) | Circuit #1 | 110-120 | 1 | 60 | 14.35 | 1,106 | 2+G | 5-20P or L5-20P | N/A | N/A | N/A | |
| HMBC3 | 36.75 | 39.00 | 4.63 | Remote(Type I) | Circuit #1 | 110-120 | 1 | 60 | 1.38 | 138 | 2+G | Leads Multiple | 20.00 | 4104 | 3800 | 900 |
| | | | | Self-Contained (R449A) | Circuit #1 | 110-120 | 1 | 60 | 15.72 | 1,426 | 2+G | 5-20P or L5-20P | N/A | N/A | N/A | |
| HMBC4 | 48.75 | 51.00 | 4.63 | Remote(Type I) | Circuit #1 | 110-120 | 1 | 60 | 2.69 | 194 | 2+G | Leads Multiple | 20.00 | 5270 | 4880 | 950 |
| | | | | Self-Contained (R449A) | Circuit #1 | 120/230V | 1 | 60 | 10.93 | 1,814 | 3+G | 14-20P or L14-20P | N/A | N/A | N/A | |
| HMBC5 | 60.75 | 63.00 | 4.63 | Remote(Type I) | Circuit #1 | 110-120 | 1 | 60 | 2.93 | 152 | 2+G | Leads Multiple | 20.00 | 6307 | 5840 | 1,100 |
| | | | | Self-Contained (R449A) | Circuit #1 | 120/230V | 1 | 60 | 12.00 | 2,183 | 3+G | 14-20P or L14-20P | N/A | N/A | N/A | |
| HMBC6 | 73.13 | 75.38 | 4.63 | Remote(Type I) | Circuit #1 | 110-120 | 1 | 60 | 3.05 | 262 | 2+G | Leads Multiple | 20.00 | 6912 | 6400 | 1,200 |
| | | | | Self-Contained (R449A) | Circuit #1 | 120/230V | 1 | 60 | 13.62 | 2,106 | 3+G | 14-20P or L14-20P | N/A | N/A | N/A | |

*** Does not include electric defrost on freezer models.

Regulatory Approvals:

All Models
 Accordance with AHRI Std 1200
 ETL Listed to UL 471
 ETL Listed to CAN/CSA 22.2 No. 120
 ETL Sanitation to NSF/ANSI 7

Important Notes:

- ELECTRICAL NOTE: If GFCI is required, a GFCI breaker MUST be used in lieu of a GFCI receptacle
- 35" Minimum door entry clearance required (without shipping skid).
- Units are supplied with levelers which must be adjusted during installation to ensure the unit is level and plumb.

⚠ WARNING: This product can expose you to chemicals, including Urethane (Ethyl Carbamate), which are known to the State of California to cause cancer and birth defects or other reproductive harm. For more information go to www.P65Warnings.ca.gov.



In Accordance with
AHRI Std 1200

DOE 2017
Energy Efficiency
Compliant